



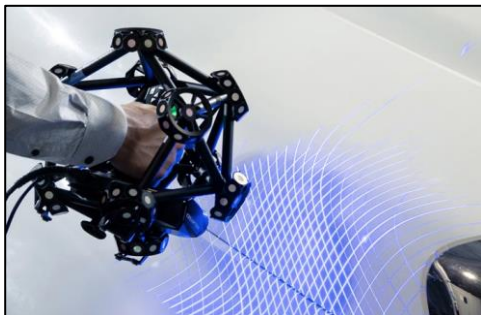
# Metrology Solutions

# Company Profile

Blue Star Engineering & Electronics Ltd. is a wholly owned subsidiary of Blue Star Limited, a large engineering conglomerate headquartered in Mumbai. The company has built a strong reputation for providing advanced technology products as well as turnkey engineering solutions to several industries across the country. It has evolved from being an exclusive distributor to a high-end system integrator and value-added reseller for many globally renowned manufacturers. Blue Star Engineering & Electronics' Metrology wing is a leading provider of metrology and equipment, supporting Indian industries with high-quality, high-performance metrology equipment, and customized automated solutions. Blue Star E&E has been delivering superior technology solutions in collaboration with global technology partners. These are advanced machines with sophisticated interfaces and premium software, capable of delivering world-class results.



## Offerings



### Portable 3D Scanners

- Portable 3D scanners are highly reliable and accurate in acquiring 3D measurements of any subject, making the inspection job easier
- These lightweight handheld scanners are mainly used for product development and quality control application in a wide variety of industries such as Automotive, Aerospace, Energy and Consumer Products



### Inline Metrology

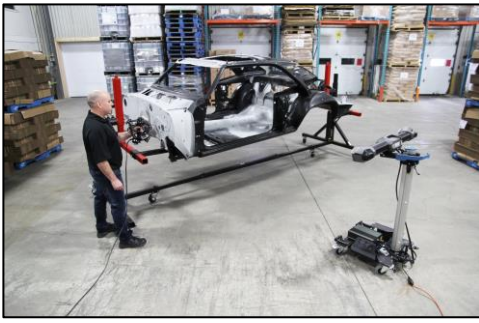
- Inline Metrology such as dimensional gauging is a key 3D scanning and quality control process for detecting sizing errors in various parts and components
- Such errors are common and occur when the actual dimensions of the machine-worked part are different from their nominal value



### Offline Metrology

- Offline Metrology solutions are designed to provide an accurate and efficient measurement of parts and components in manufacturing facilities.
- The hardware offers a wide range of sensors that measure the dimensions of parts, components, and assemblies
- The software then interprets the data and provides the user with accurate and reliable measurements





### **Metrology Inspection Service**

- Blue Star E&E offers metrology inspection services depending on the requirements of the customer
- This cost-effective service is designed for unique customers with a lesser number of parts to be inspected
- With our Metrology inspection services, clients can rest assured that the products they manufacture meet the highest standards of accuracy and quality



### **Robot Guidance Solutions**

- EzRG is a generic six-degree-of-freedom robot guidance solution using vision cameras to identify locations and offering many configurations and user-frame calculation strategies
- Can be used for Door, hood, lift gate, roof, trunk lids, and windshield insertion and installation, Racking, de-racking, palletizing and de-palletizing



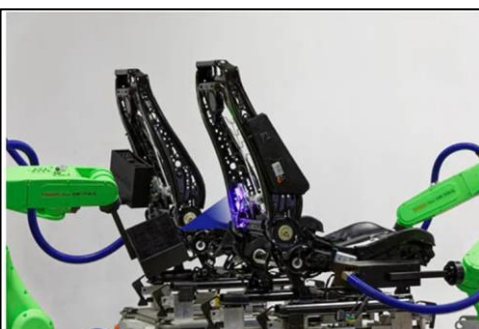
### **Dimensional Measurement**

- Flexisight is an automated measurement system offering 100% visual inspection and dimensional quality information on manufactured components
- Measurement of 3D and 2D features, including holes, slots, studs, surface points, edges, clips, gaps, and flushness
- Can be used in Body in white, underbody, doors, hoods and decklids, gap and flush



### **Robot Bin-picking**

- Flexipick is an advanced bin-picking system allowing a robot to pick up parts randomly inside a bin and present them to the assembly process
- Compares point clouds to the CAD model and returns all possible gripping configurations
- Can be used in Casted, forged, stamped, and machined parts with complex or simple geometries



### **3D Vision Inspection**

- PreciScan3D Inspection Station is a fully integrated plug-and-play, metrology-grade, non-contact 3D scanning, and flexible measurement system for near-line, inline, or offline quality control
- Can be used in the 3D inspection of commonly manufactured components' Surface defects, thickness, dimensional variation, surface profiles, and feature presence

## Portable 3D Scanner



**GoScan**



**MetraScan**



**HandyScan**

## Global Partners



**BLUE STAR**

**INDUSTRIAL  
SOLUTIONS**

